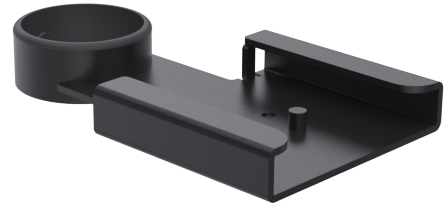


SP1 Mounting for Zebra/Motorola Scanner DS9208

Features:

- Easy use and installation
- 5-year warranty



Specifications

| | |
|--------------------------------|------------|
| Warranty | 5 Years |
| Unit per box | 1 |
| Net Unit weight (kg) | 0.3 |
| Gross Unit weight - box 1 (kg) | 0.32 |
| Colour Type | Structured |
| Height Adjustable | No |
| HS code | 8473308000 |
| Main Material | Metal |

Product Dimensions

| | |
|-------------------|------|
| Unit Depth (mm): | 161 |
| Unit Height (mm): | 22.6 |
| Unit Width (mm): | 86 |

Package Dimensions

| | |
|----------------------|-----|
| Package Depth (mm): | 699 |
| Package Height (mm): | 500 |
| Package Width (mm): | 320 |